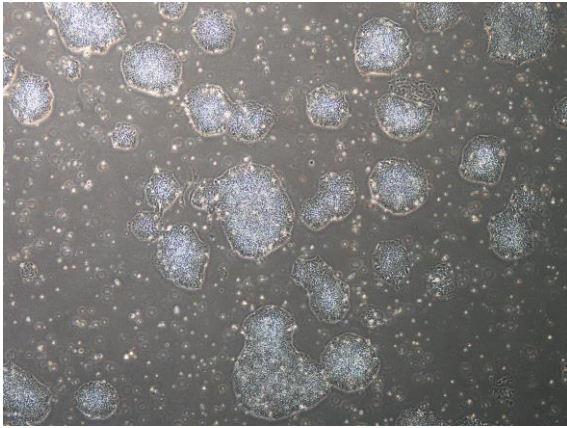
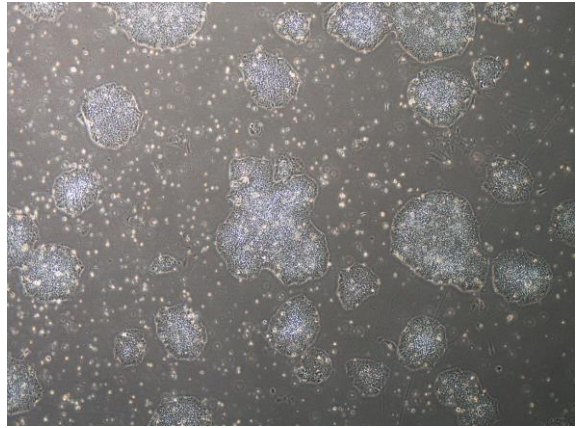


【 CiRA-j-1413 】 Morphology of iPSC colonies

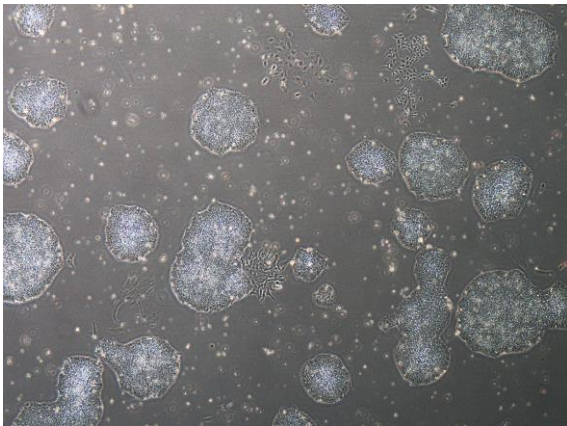
CiRA-j-1413-A: passage-2



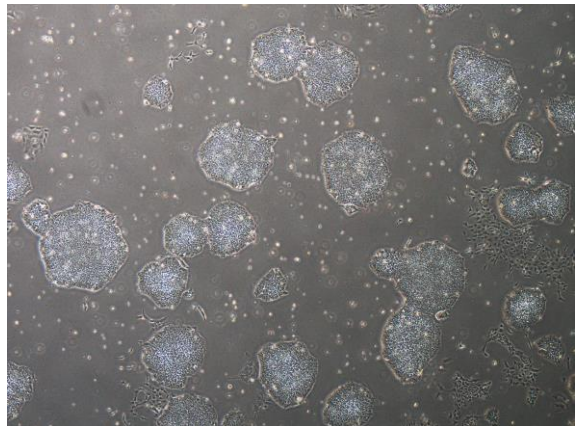
CiRA-j-1413-B: passage-2



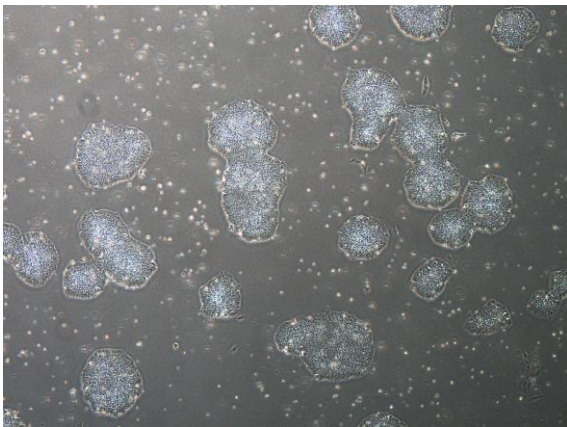
CiRA-j-1413-C: passage-2



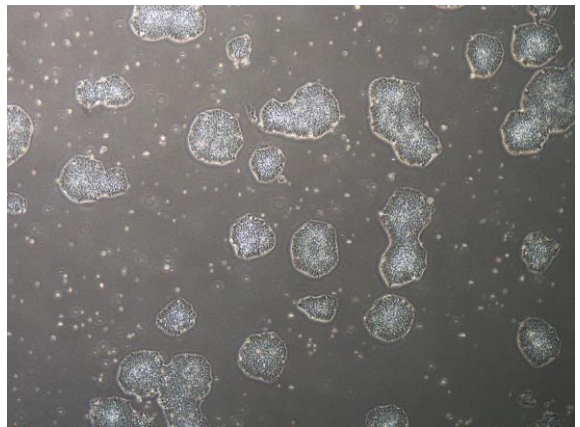
CiRA-j-1413-D: passage-2



CiRA-j-1413-E: passage-2



CiRA-j-1413-F: passage-2



(All images were captured at 4x magnification)